

SerDes Toolbox™

Getting Started Guide



MATLAB® & SIMULINK®

R2021b



How to Contact MathWorks



Latest news: www.mathworks.com
Sales and services: www.mathworks.com/sales_and_services
User community: www.mathworks.com/matlabcentral
Technical support: www.mathworks.com/support/contact_us



Phone: 508-647-7000



The MathWorks, Inc.
1 Apple Hill Drive
Natick, MA 01760-2098

SerDes Toolbox™ Getting Started Guide

© COPYRIGHT 2019–2021 by The MathWorks, Inc.

The software described in this document is furnished under a license agreement. The software may be used or copied only under the terms of the license agreement. No part of this manual may be photocopied or reproduced in any form without prior written consent from The MathWorks, Inc.

FEDERAL ACQUISITION: This provision applies to all acquisitions of the Program and Documentation by, for, or through the federal government of the United States. By accepting delivery of the Program or Documentation, the government hereby agrees that this software or documentation qualifies as commercial computer software or commercial computer software documentation as such terms are used or defined in FAR 12.212, DFARS Part 227.72, and DFARS 252.227-7014. Accordingly, the terms and conditions of this Agreement and only those rights specified in this Agreement, shall pertain to and govern the use, modification, reproduction, release, performance, display, and disclosure of the Program and Documentation by the federal government (or other entity acquiring for or through the federal government) and shall supersede any conflicting contractual terms or conditions. If this License fails to meet the government's needs or is inconsistent in any respect with federal procurement law, the government agrees to return the Program and Documentation, unused, to The MathWorks, Inc.

Trademarks

MATLAB and Simulink are registered trademarks of The MathWorks, Inc. See www.mathworks.com/trademarks for a list of additional trademarks. Other product or brand names may be trademarks or registered trademarks of their respective holders.

Patents

MathWorks products are protected by one or more U.S. patents. Please see www.mathworks.com/patents for more information.

Revision History

| | | |
|----------------|-------------|---|
| March 2019 | Online only | New for Version 1.0 (Release 2019a) |
| September 2019 | Online only | Revised for Version 1.1 (Release 2019b) |
| March 2020 | Online only | Revised for Version 1.2 (Release 2020a) |
| September 2020 | Online only | Revised for Version 2.0 (Release 2020b) |
| March 2021 | Online only | Revised for Version 2.1 (Release 2021a) |
| September 2021 | Online only | Revised for Version 2.2 (Release 2021b) |

Getting Started with SerDes Toolbox

1

SerDes Toolbox Product Description 1-2

Introduction to SerDes

2

Design SerDes System and Export IBIS-AMI Model 2-2

Getting Started with SerDes Toolbox

SerDes Toolbox Product Description

Design SerDes systems and generate IBIS-AMI models for high-speed digital interconnects

SerDes Toolbox provides a MATLAB® and Simulink® model library and a set of analysis tools and apps for the design and verification of serializer/deserializer (SerDes) systems or high-speed memory PHYs such as DDR5.

With the SerDes Designer app, you can use statistical analysis to rapidly design wired communications links. The app provides parameterized models and algorithms that let you explore a wide range of equalizer configurations to improve channel performance. You can assess metrics such as eye diagram, bathtub curve, and channel operating margin (COM), including the effects of jitter and crosstalk.

With MATLAB based building blocks such as CTLE, DFE, FFE, and CDR, you can describe your chosen architecture using datasheets or measurement data and simulate control and adaptive algorithms. White-box examples of typical applications such as PCIe, USB, Ethernet, and DDR provide reference designs that you can use as a basis for your own designs.

SerDes Toolbox supports automatic generation of dual IBIS-AMI models for statistical analysis and time-domain simulation. These models can be used with third-party channel simulators for system integration and verification.

Introduction to SerDes

Design SerDes System and Export IBIS-AMI Model

This example shows how to use the SerDes Designer app to create and analyze a SerDes system, and create the IBIS-AMI models for the transmitter and receiver from Simulink®. In this example, you can learn how to design the top-level SerDes system in the app, then export a Simulink model for further time-domain analysis. Finally, you can export the IBIS-AMI models for the finalized SerDes system from Simulink.

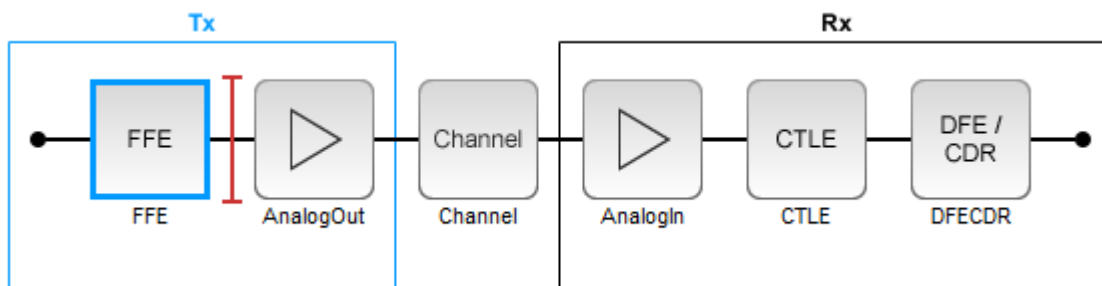
Configure SerDes Designer App

Open the SerDes Designer app by typing the following command in the MATLAB command prompt:

```
>> serdesDesigner
```

Alternately, in the **Apps** tab, under **Signal Processing and Communications**, click the app icon.

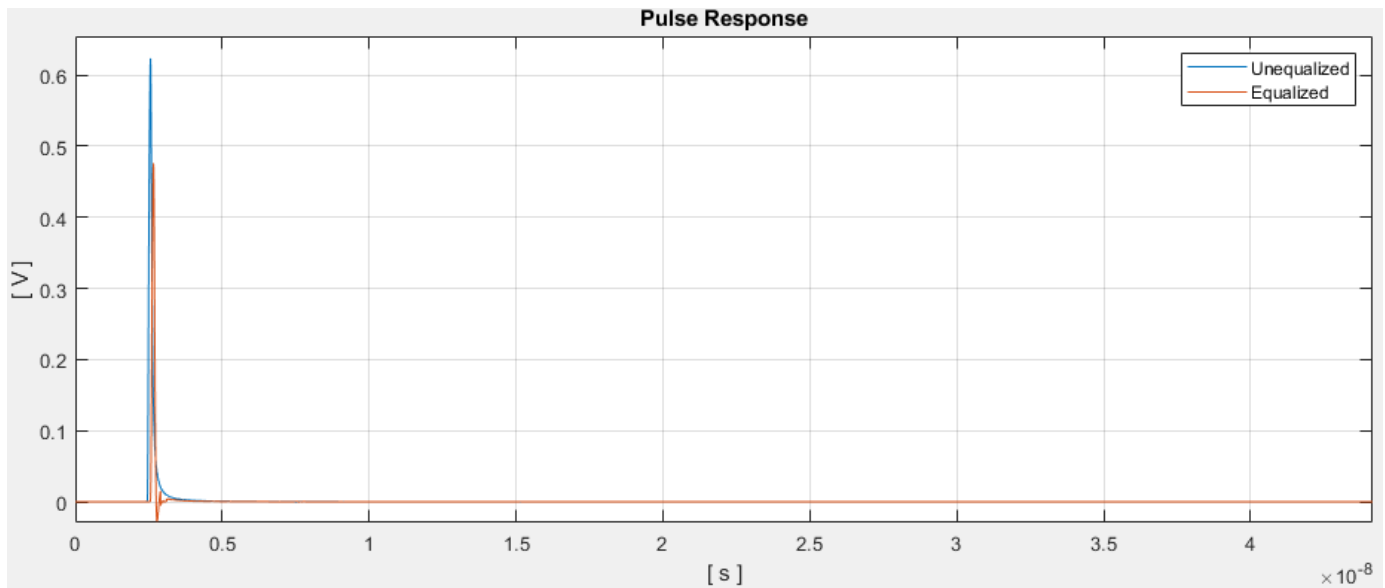
In the SerDes System window, select AnalogOut block and add an FFE block to its left, as shown by the position of the red cursor. Then select the AnalogIn block and add a CTLE block and a DFECDR block to its right.



Select the FFE block in the Tx subsystem. In the Block Parameters window, change **Tap weights** from $[0 \ 1 \ 0 \ 0 \ 0]$ to $[0 \ 1 \ 0 \ 0]$, so that the FFE has one pre tap, one main tap, and two post taps. Leave all other blocks in their default settings.

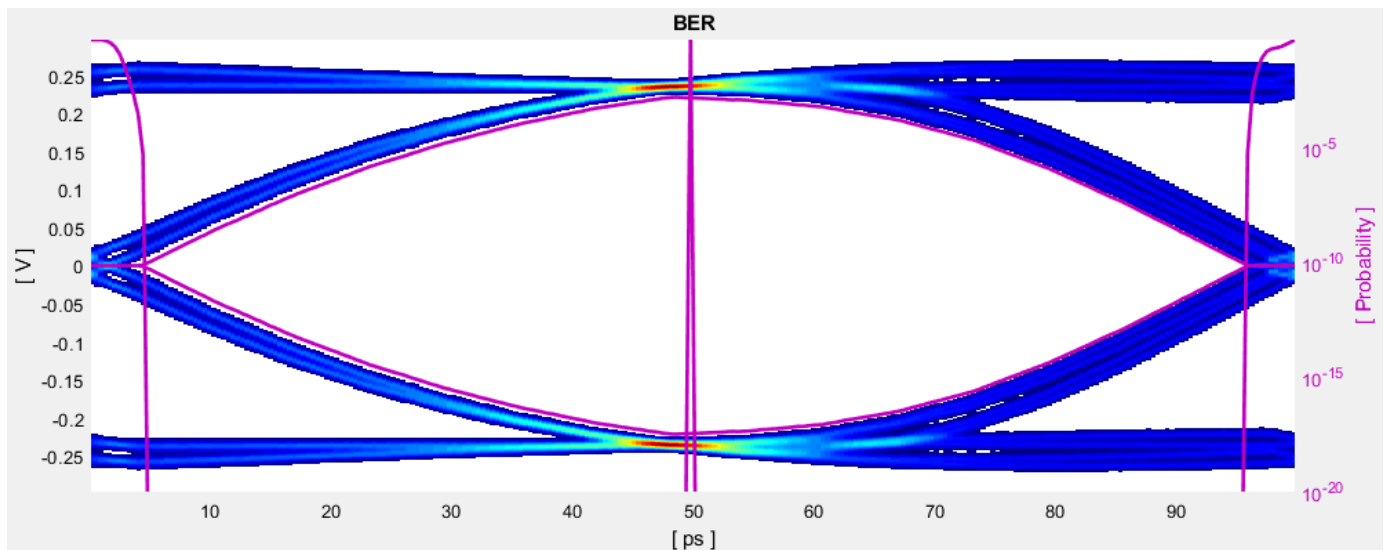
Perform Statistical Analysis

From the **Analysis** section in the app toolstrip, select **Add Plots > Pulse Response** to display the pulse response of the SerDes system. You can zoom in to your area of interest where pulse equalization works.



Notice the difference in the pulse response before and after equalization.

Select **Add Plots > BER** to display the Statistical Eye, Bathtub, and Contours curves overlaid together in a single plot.



The eye diagram is used to determine the quality of signal integrity. An "open" eye indicates a higher probability of bit recovery. The bathtub curve plots the bit error rate as a horizontal function of the data eye and corresponds to eye width. The contour curve plots the bit error rate as a vertical function of the data eye, and corresponds to eye height.

Select **Add Plots > Report** to view the SerDes system report.

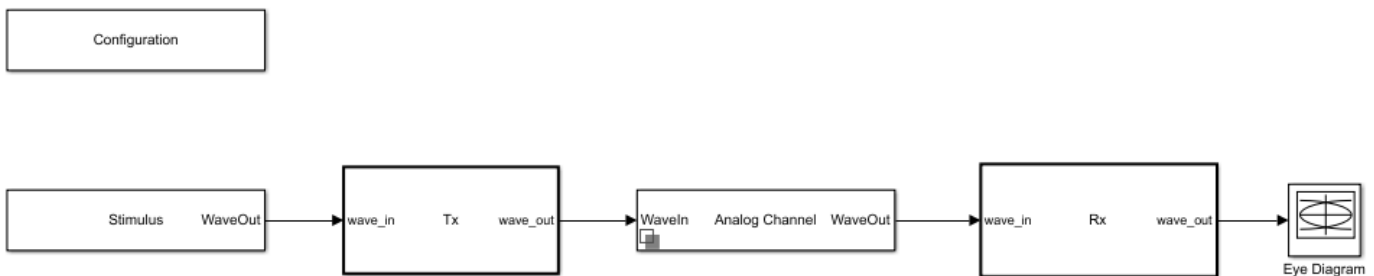
| Pulse Response × BER × Report × | | |
|---------------------------------|-----------------------|---------------------------------|
| | Name | Data |
| 1 | Eye Height (V) | 0.43304 |
| 2 | Eye Width (ps) | 91.4896 |
| 3 | Eye Area (V*ps) | 25.8097 |
| 4 | COM | 21.7733 |
| 5 | VEC | 0.73873 |
| 6 | | |
| 7 | CTLE:ConfigSelect | 6 |
| 8 | | |
| 9 | DFECDR:TapWeights (V) | [0.0194 0.0198 -0.0018 -0.0044] |

Notice that **CTLE:ConfigSelect** and **DFECDR:TapWeights (V)** is determined by the optimization algorithm, since both CTLE and DFECDR blocks were in adapt **Mode**.

Export SerDes System to Simulink



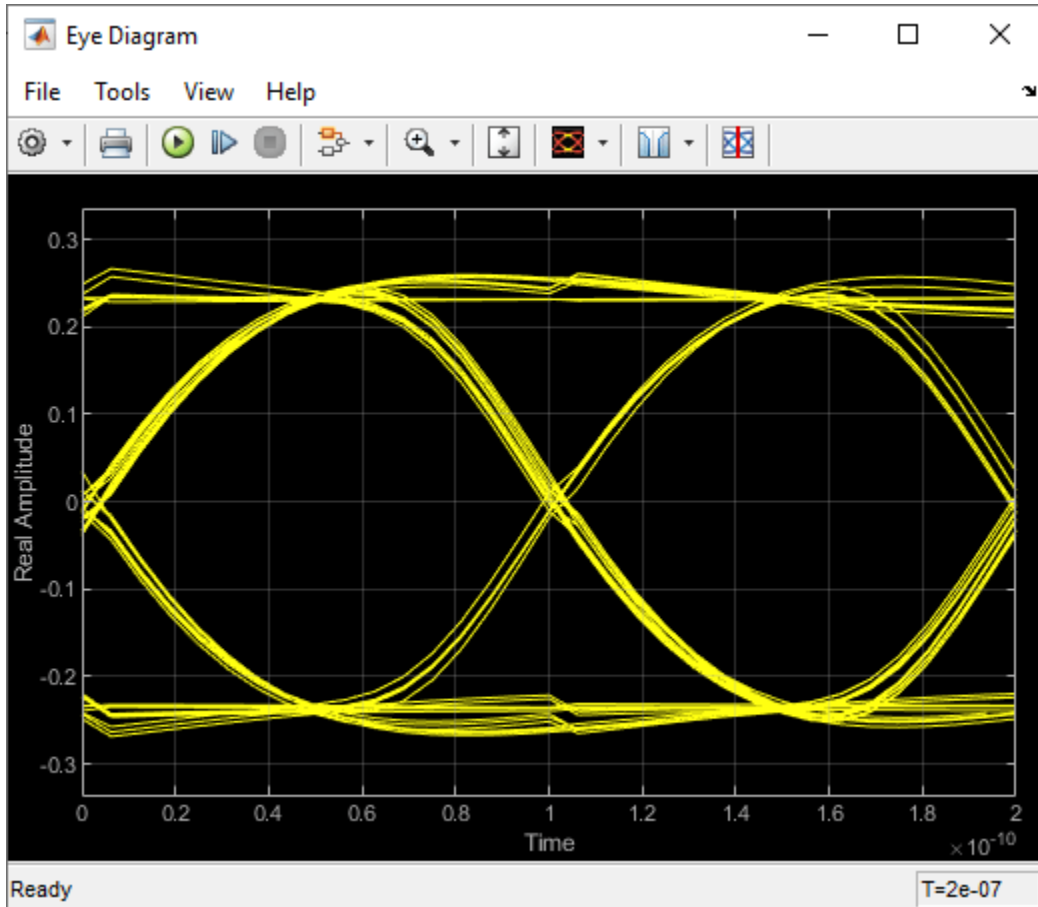
From the **EXPORT** tab in the app toolstrip, click the **Export** button to export the SerDes system to the Simulink environment. The Simulink canvas contains a model that represents the SerDes system configured in the app.



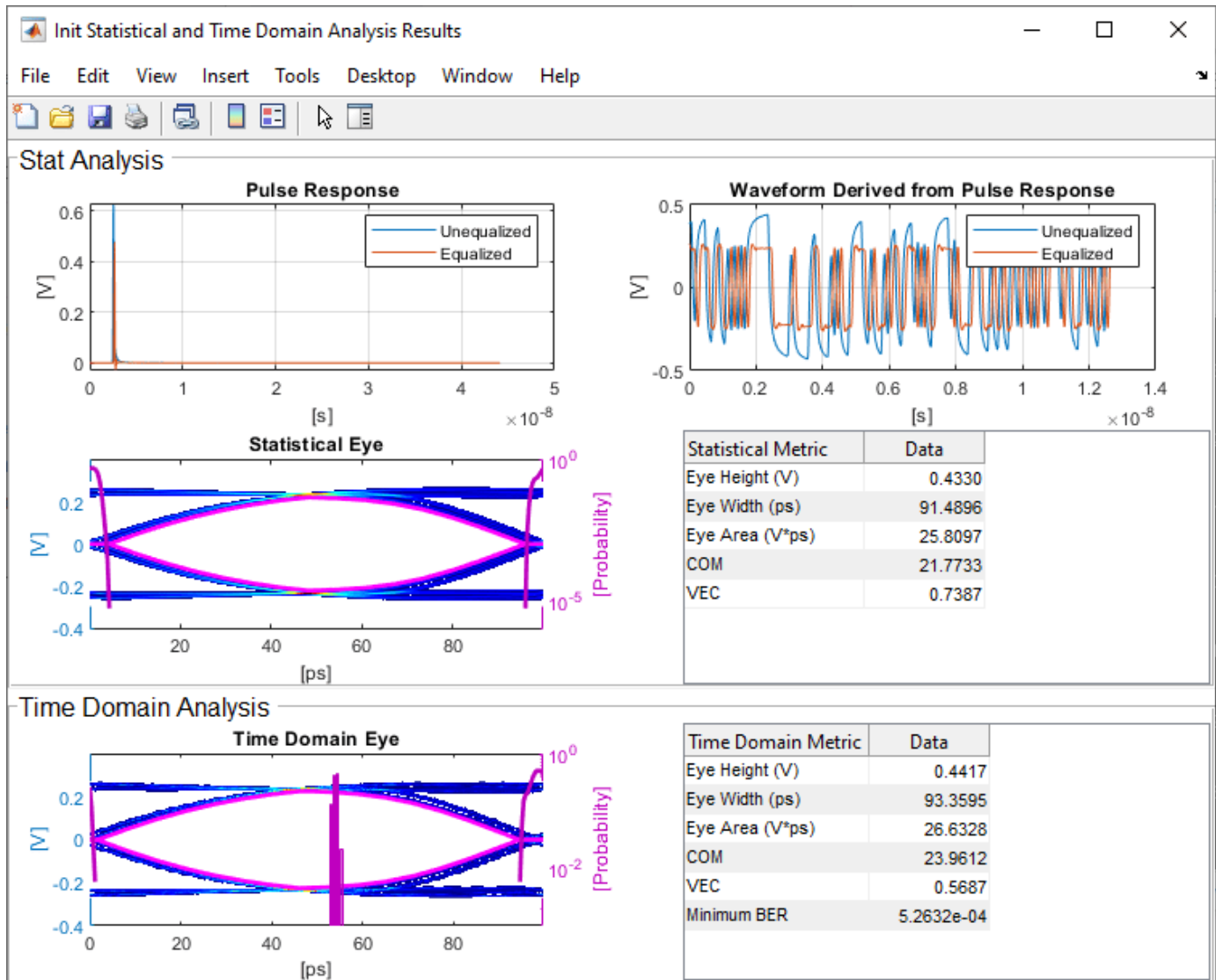
- Double click the Configuration block to open the Block Parameters dialog box. The parameter values for **Symbol time (s)**, **Samples per symbol**, **Target BER**, **Modulation**, and **Signaling** is carried over from the SerDes Designer app.
- Double click the Stimulus block to open the Block Parameters dialog box. You can set the **PRBS** (pseudorandom binary sequence) order and the number of symbols to simulate. This block is not carried over from the SerDes Designer app.
- Double click the Tx block to look inside the Tx subsystem. The subsystem has the FFE block carried over from the SerDes Designer app. An Init block is also introduced to model the statistical portion of the AMI model. Double click the FFE block and notice that the parameter values for **Tap weights** is carried over from the app.
- Double click the Analog Channel block to open the Block Parameters dialog box. The parameter values for **Target frequency**, **Loss**, **Impedance** and Tx/Rx analog model parameters is carried over from the SerDes Designer app.
- Double click on the Rx block to look inside the Rx subsystem. The subsystem has the CTLE and DFECDR blocks carried over from the SerDes Designer app. An Init block is also introduced to model the statistical portion of the AMI model.

Run Simulation

Run the model to simulate the SerDes system. Two plots are generated. The first one is a live time-domain eye diagram that is updated as the model is running.



The second plot contains four views of the statistical simulation results and two views of the time-domain simulation results. The statistical simulation results include the pulse response, statistical eye with bathtub and contours curve, output waveform derived from pulse response, and a report including the eye height, eye width, eye area, channel operating margin (COM) and vertical eye closure (VEC). The time-domain results include the time-domain eye and time-domain eye metrics including the eye height, eye width, eye area, COM, VEC, and Minimum BER.



Generate Tx/Rx IBIS-AMI Models

Open the Block Parameter dialog box for the Configuration block and click on the **Open SerDes IBIS/AMI Manager** button.

- In the **Export** tab, configure the models and files to be exported. **Corner percentage** scales the I-V and V-T curve data, voltage range, and other IBIS data. **AMI Model Settings - Tx** and **AMI Model Settings - Rx** determine whether the exported model processes the Init data, the GetWave data, or both (Dual model).
- In the **IBIS** tab, the analog model values are converted to standard IBIS parameters that can be used by any industry standard simulator.
- In the **AMI-Tx** and **AMI-Rx** tabs, the reserved parameters are listed first followed by the model-specific parameters, which follow the format of a typical AMI file.

In the **Export** tab of the **SerDes IBIS-AMI Manager** parameter window, specify the target directory as C:\Users\\Desktop\DLL and click the **Export** button. On your desktop, inside a newly

created DLL folder, you can find the generated `serdes.ibs`, `serdes_rx.ami` and `serdes_tx.ami` files.

You can now test the IBIS-AMI models in a standard AMI model simulator.

See Also

FFE | CTLE | DFECDR | **SerDes Designer**

More About

- “Fundamentals of SerDes Systems”

